

4

3

2

1

D

D

C

C

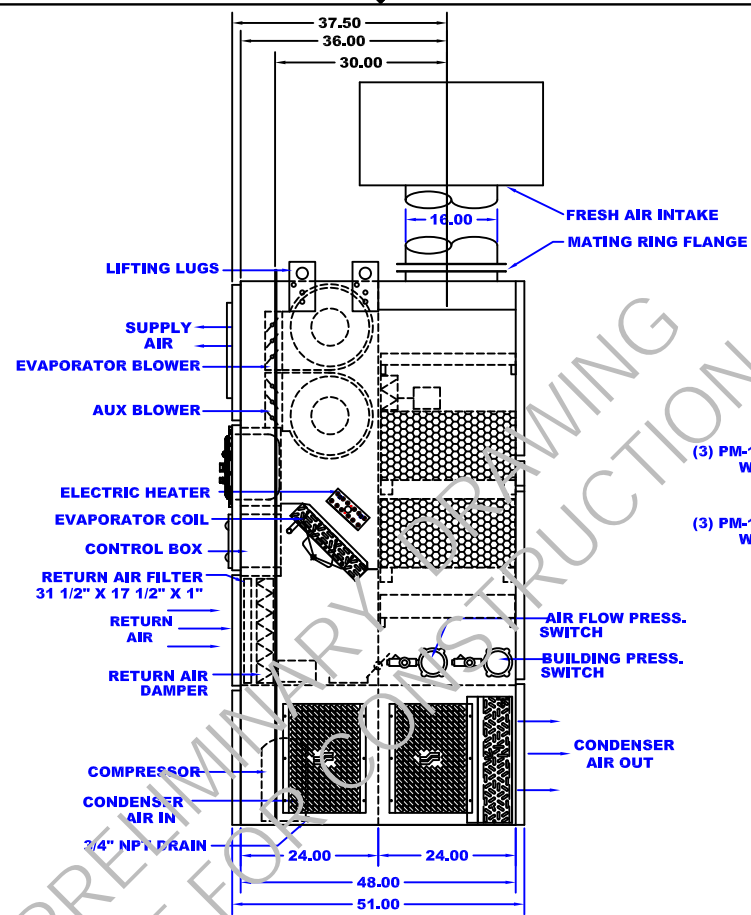
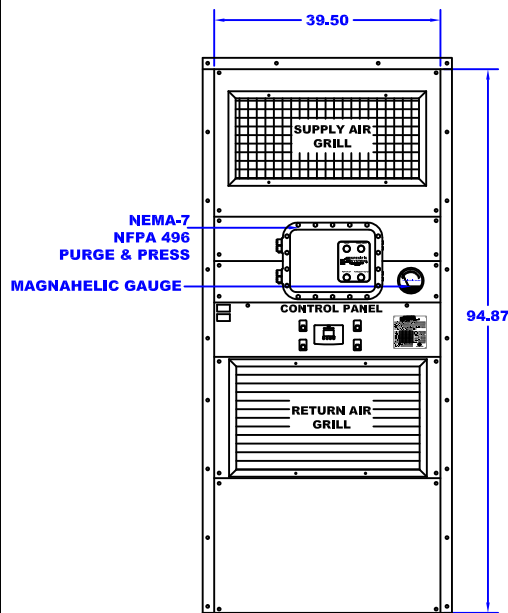
B

B

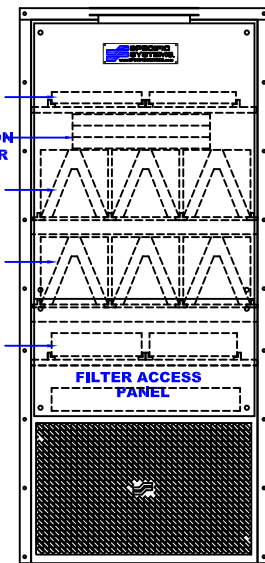
A

A

REVISIONS				
ZONE	REV.	DESCRIPTION	DATE	APPR.



- (2) PRE-FILTER 24" x 18" x 2" PRESSURIZATION BYPASS DAMPER
- (3) PM-12 CHEM. FILTER W/ 150 LB. PURFIL CHEM. MEDIA
- (3) PM-12 CHEM. FILTER W/ 150 LB. PURFIL CHEM. MEDIA
- (2) FINAL FILTER 24" x 18" x 4"



DRAWING STATUS	
ISSUED FOR APPROVAL	<input type="checkbox"/>
FOR CONSTRUCTION	<input type="checkbox"/>
AS BUILT	<input type="checkbox"/>



TITLE:
**GENERAL ARRANGEMENT
600 SERIES W/ FILTER BOX
DIV. II NFPA 496**

SCALE:	DRAWN BY: DM	P.O.#:
DATE:	CHK'D:	JOB#: 600
	REV:	DWG#: 600-01A

THIS DOCUMENT CONTAINS CONFIDENTIAL PROPRIETARY INFORMATION AND IS THE PROPERTY OF SPECIFIC SYSTEMS. IT SHALL NOT BE REPRODUCED, USED, TRANSFERRED TO OTHER DOCUMENTS OR DISCLOSED TO ANY UNAUTHORIZED PERSONS WITHOUT THE EXPRESS WRITTEN PERMISSION OF SPECIFIC SYSTEMS. ALL RIGHT OF DESIGN OR INVENTION ARE RESERVED TO SPECIFIC SYSTEMS.

NOTE: PNEUMATIC TUBING
 GREEN - AIR FLOW SWITCH (HIGH)
 YELLOW - BLDG. PRESS. SWITCH (HIGH)
 BLUE - AIR FLOW / BLDG. PRESS. (LOW)

4

3

2

1