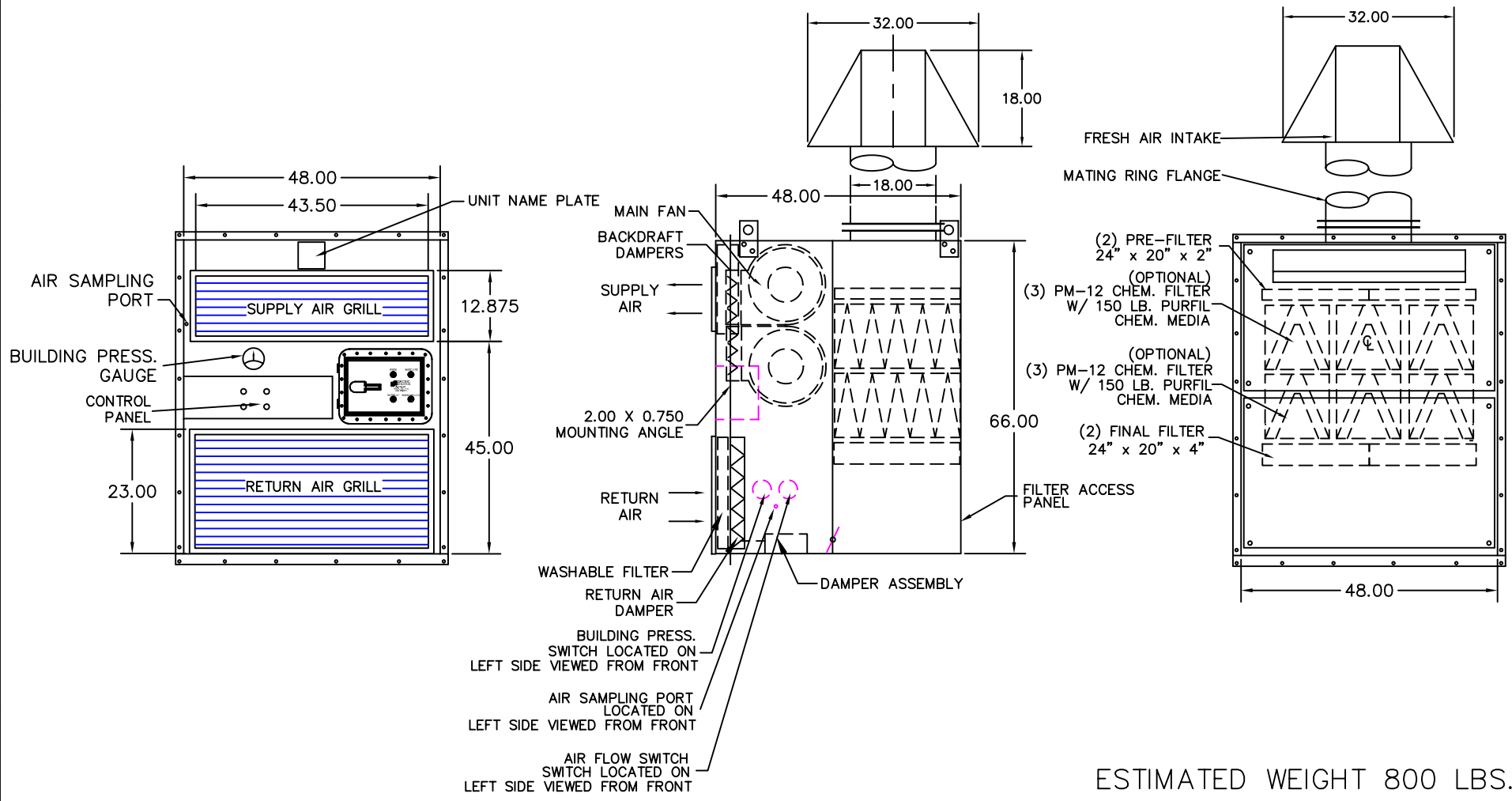


Unit shown with available explosion proof control panel


| REVISIONS |     |             |      |          |
|-----------|-----|-------------|------|----------|
| ZONE      | REV | DESCRIPTION | DATE | APPROVED |
|           |     |             |      |          |
|           |     |             |      |          |

D  
C  
B  
A

D  
C  
B  
A



ESTIMATED WEIGHT 800 LBS.

|  |  |                   |                  |
|--|--|-------------------|------------------|
|  <b>SPECIFIC SYSTEMS</b><br>7655 E. 41ST, TULSA, OK, 74145<br>U.S.A. (918) 663-9321 | <small>THIS DOCUMENT CONTAINS CONFIDENTIAL PROPRIETARY INFORMATION AND IS THE PROPERTY OF SPECIFIC SYSTEMS. IT SHALL NOT BE REPRODUCED, USED, TRANSFERRED TO OTHER DOCUMENTS OR DISCLOSED TO ANY UNAUTHORIZED PERSONS WITHOUT THE EXPRESS WRITTEN PERMISSION OF SPECIFIC SYSTEMS. ALL RIGHT OF DESIGN OR INVENTION ARE RESERVED TO SPECIFIC SYSTEMS.</small> |                   |                  |
|  | SIZE:  | SCALE:            | REV:             |
|  | P.O.#:   | DRAWN BY:<br>DM   | CHK'D:           |
|  | DATE:<br>08/11/04  | JOB#:<br>PPU-4000 | DWG#:<br>4000-01 |

TITLE:  
 GENERAL ARRANGEMENT  
 VERT. PPU-4000  
 W/ OPTIONAL CHEM. FILTER

4 | 3 | 2 | 1