

## AUTO DUPLEXOR / MULTIPLEXOR

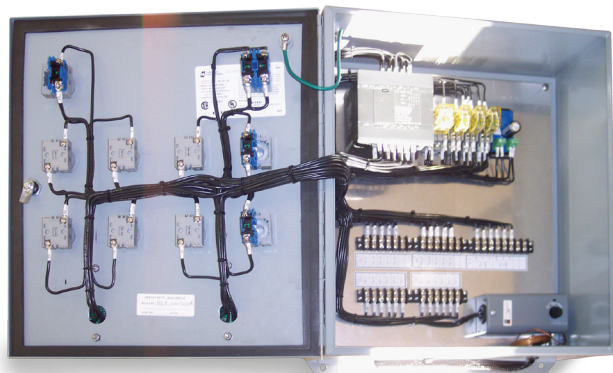


**Figure 1.** Multiplexor for controlling four units. This example includes remote thermostats, and visible alarm lights



**Figure 2.** An example of an application benefiting from the use of an auto duplexor.

**Figure 3, right.** The interior of an auto duplexor. Note the neatly loomed and labeled wiring for ease of identification.



### PRODUCT APPLICATION

The Multiplexor Control Panel is an option provided for applications that require multiple systems to be installed for a conditioned area. This provides an additional redundancy, often desired for unattended sites, and provides several standard services including:

- Auto-sequencing between systems, based on 24 hr timer
- Manual selection of any HVAC system in the circuit
- Automatic Dual-Unit operation – High or Low temperature condition
- High Temperature Alarm – Form C Dry Contacts

Multiplexors are available to control two, three, or four individual HVAC units.

### PRODUCT DESCRIPTION

The multiplexor is a microprocessor based PLC control panel for controlling multiple Specific Systems units. If a failure of the main unit occurs (determined through use of multiple sensors inside each unit), the multiplexor automatically energizes another system to keep the area pressurized and can provide an audible or visible alarm to notify personnel of the failure. Override of the main unit can also be caused by a power-failure of the main unit or a high/low temperature alarm. All multiplexors include the ability to manually override and lockout main unit. Multiplexors are enclosed in hinged 6" deep enclosures from 16"× 14" to 20" × 24". These panels are shipped ready for remote mounting and remote monitoring from another location.

### AVAILABLE OPTIONS

Please contact Specific Systems about other available options.

- Duplexor, Triplexor, Quadplexor
- NEMA 4X Enclosure (Stainless Steel)
- NEMA 7 Enclosure (Explosion Proof)
- Remote Temperature Sensor
- Visible Alarm
- Audible Alarm
- Low Temperature Alarm
- Remote Thermostat