

4

3

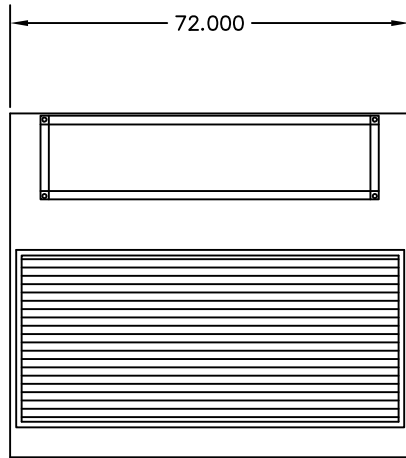
2

1

Economizer shown is optional equipment

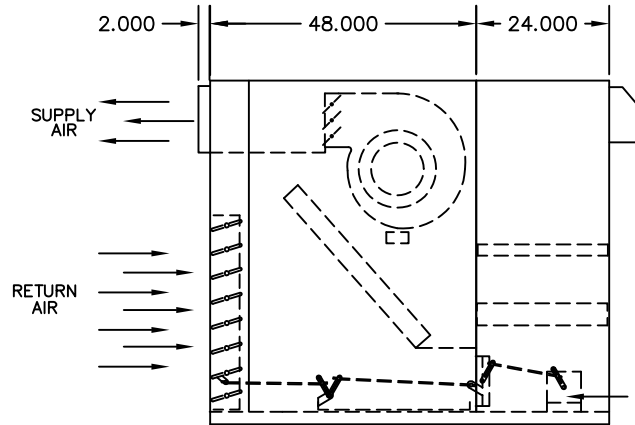
REVISIONS				
ZONE	REV	DESCRIPTION	DATE	APPROVED

EVAPORATOR - FAN/COIL SECTION



62.000

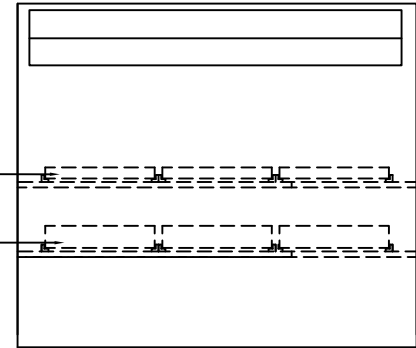
EVAPORATOR CONTROL BOX LOCATION IS TBA
~10" DEEP EXTERNAL CONTROL BOX TO BE LOCATED
ON LEFT OR RIGHT SIDE OF CABINET



(3) PRE-FILTER
24" x 20" x 2"

(3) FINAL FILTER
24" x 20" x 4"

ECONOMIZER



D

D

C

C

B

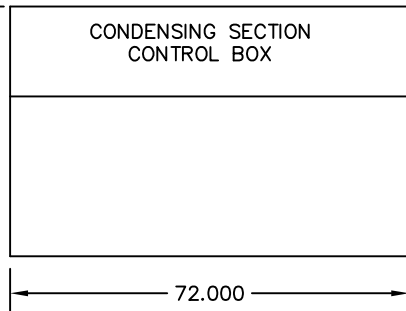
B

A

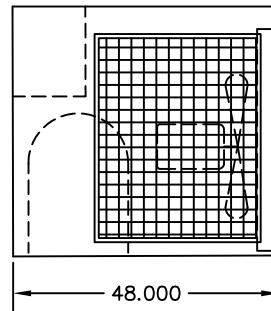
A

CONDENSING SECTION
CONTROL BOX

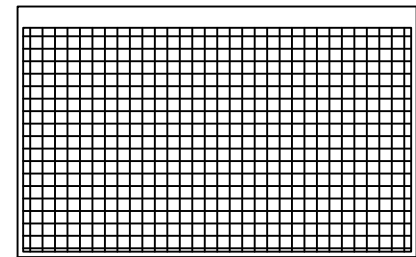
45.000



CONDENSING SECTION



48.000



SPECIFIC SYSTEMS
7655 E. 41ST, TULSA, OK, 74145
U.S.A. (918) 663-9321

THIS DOCUMENT CONTAINS CONFIDENTIAL PROPRIETARY INFORMATION AND IS THE PROPERTY OF SPECIFIC SYSTEMS. IT SHALL NOT BE REPRODUCED, USED, TRANSFERRED TO OTHER DOCUMENTS OR DISCLOSED TO ANY UNAUTHORIZED PERSONS WITHOUT THE EXPRESS WRITTEN PERMISSION OF SPECIFIC SYSTEMS. ALL RIGHT OF DESIGN OR INVENTION ARE RESERVED TO SPECIFIC SYSTEMS.

TITLE: MODEL INPAC 12180-NM-NC	SIZE:	SCALE:	REV: 0
	P.O.#:	DRAWN BY:	CHK'D:
	DATE:	JOB#:	DWG#:

4

3

2

1