

4

3

2

1

REVISIONS				
ZONE	REV.	DESCRIPTION	DATE	APPR.

D

D

C

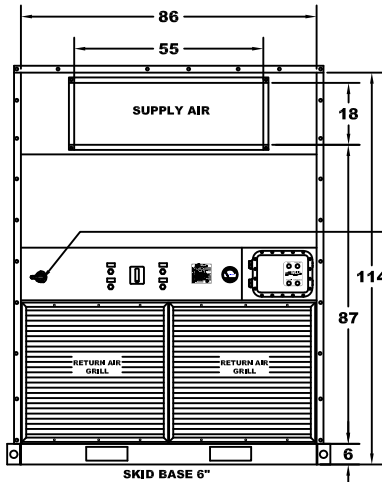
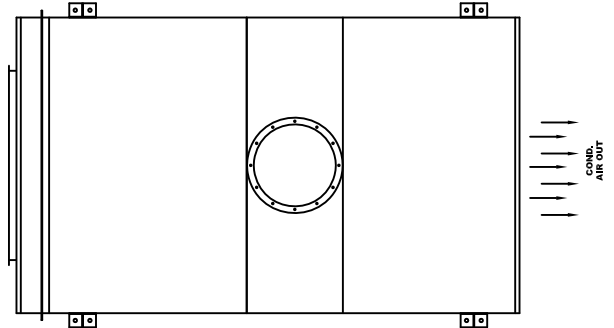
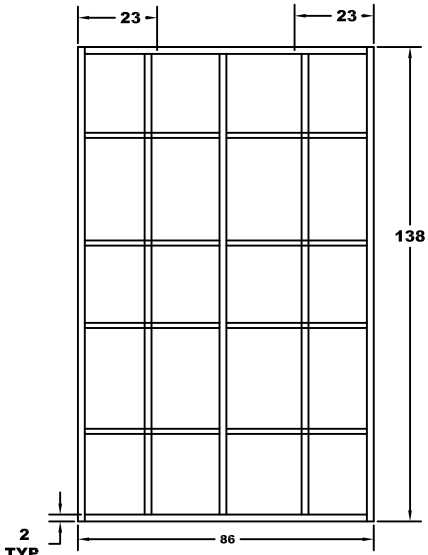
C

B

B

A

A



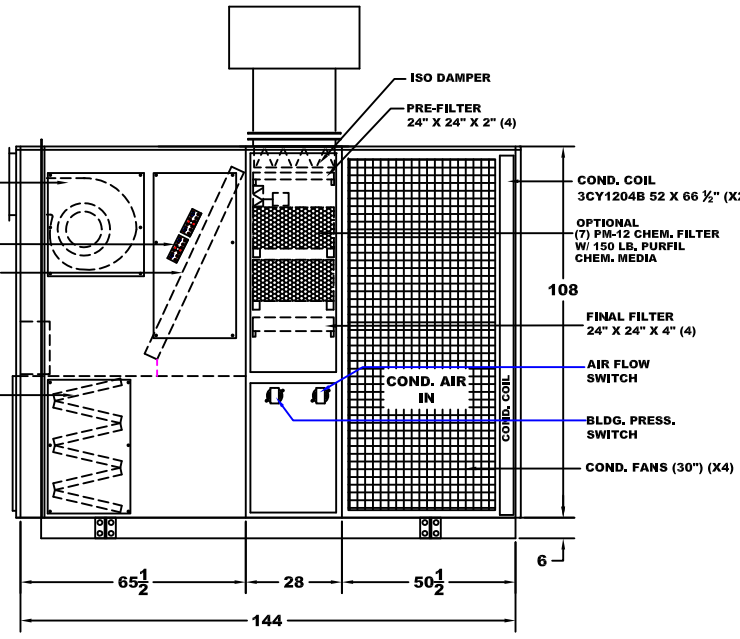
(45 & 50 TON MAIN FAN)  
 LAU 18-18 20,100 CFM  
 @ 3.25" S.P., (25 HP 1140 RPM)

(35 & 40 TON MAIN FAN)  
 A18-13 LAU  
 CL. II 14,000 CFM  
 @ 2.0" EXT. S.P.

ELEC. HEATER


EVAP. COIL  
 3EY1204D 60 X 79

RETURN AIR FILTER  
 20" X 20" X 2" (X20)  
 (50 SQ FT)(450 FPM)  
 CHANGED FROM INSIDE  
 OF ROOM



**APPROX. UNIT WEIGHT 4200 LBS**

**DRAWING STATUS**



7655 East 41ST Street Tulsa, OK 74145  
 U.S.A (918) 663-9321

**TITLE:**  
**GENERAL ARRANGEMENT**  
**MODEL 16420/16480/16600**

<b>SCALE:</b> NONE	<b>DRAWN BY:</b> DM	<b>P.O.#:</b>
<b>DATE:</b> 05/11/11	<b>CHK'D:</b>	<b>JOB#:</b> 16000
	<b>REV:</b> 0	<b>DWG#:</b> 16000-01

THIS DOCUMENT CONTAINS CONFIDENTIAL PROPRIETARY INFORMATION AND IS THE PROPERTY OF SPECIFIC SYSTEMS. IT SHALL NOT BE REPRODUCED, USED, TRANSFERRED TO OTHER DOCUMENTS OR DISCLOSED TO ANY UNAUTHORIZED PERSONS WITHOUT THE EXPRESS WRITTEN PERMISSION OF SPECIFIC SYSTEMS. ALL RIGHT OF DESIGN OR INVENTION ARE RESERVED TO SPECIFIC SYSTEMS.

4

3

2

1